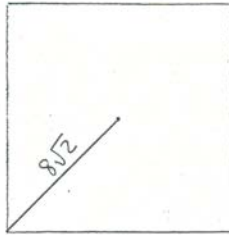
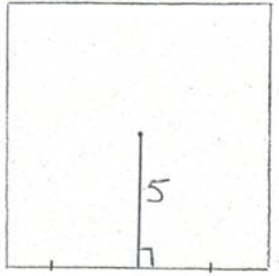


Remember, $A = \frac{1}{2}ap$ [a is the apothem and p is the perimeter]!

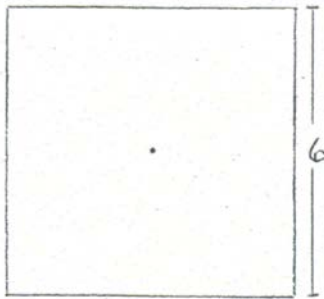
1. Find the area of a square with a radius of $8\sqrt{2}$.



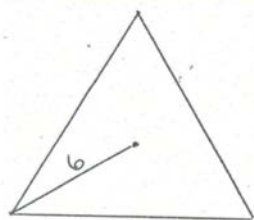
2. Find the area of a square with apothem length of 5.



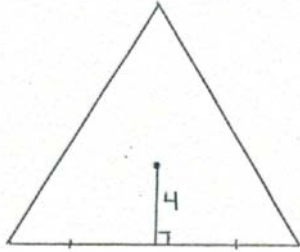
3. Find the radius of a square with a side length of 6.



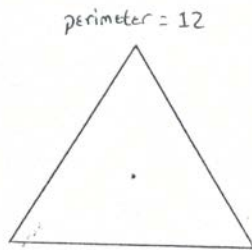
4. Find the area of an equilateral triangle with a radius of 6.



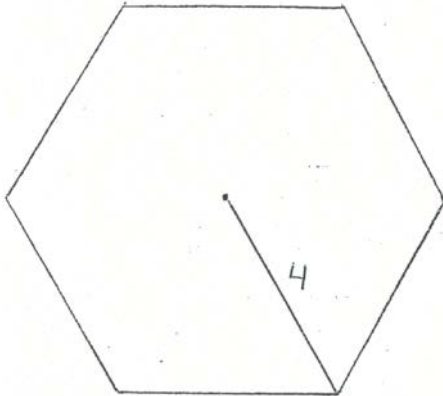
5. Find the area of an equilateral triangle with apothem length of 4.



6. Find the area of an equilateral triangle with a perimeter of 12.



7. Find the area of a regular hexagon with a radius of 4.



8. Find the area of a regular hexagon with apothem length of $5\sqrt{3}$.

